



FEBRUARY 20, 2024

ST. PAUL'S SCHOOL SCOOP

CALENDARS

- SCHOOL CALENDAR
- SINGING CALENDAR
- FEBRUARY HOT LUNCH
- MARCH HOT LUNCH

IMPORTANT INFO

- PARENT HANDBOOK
- SCRIP
- SCHOOL WEBSITE

CLASSROOM PICS

- 3K 4K 5K 1ST 2ND
- 3RD & 4TH 5TH & 6TH
- 7TH & 8TH SPORTS

**DEVOTED
DISCIPLES**
2023-2024 THEME

VERSE OF THE DAY!

THERE IS NO ONE HOLY LIKE THE LORD;
THERE IS NO ONE BESIDES YOU;
THERE IS NO ROCK LIKE OUR GOD.

1 SAMUEL 2:2



MARRIAGE RETREAT

Staff Minister Luther Curia is hosting another marriage enrichment retreat March 15-16. This year's retreat will be held on campus to make use of our new facilities and to accommodate those who aren't able to get away for a weekend. Flyers with event details and registration forms are available in the office! Register by Wednesday, February 28 either by dropping off your form in the office or online using the QR code. Feel free to contact Luther Curia with any questions: luther.curia@stpaulshowardsgrove.org



PI NIGHT



The Activities Committee invites you to Pie Night Thursday, March 14 (3.14) from 5:30-7:30 pm! Do you have a tried and true pie recipe? Enter the pie baking contest! Prizes will be given to 1st, 2nd, and 3rd place finishers. Don't know how to make pie but like to eat it? Come and enjoy some delicious pies and pizza for the whole family. There will also be plenty of activities for all ages (pin the toppings on the pizza, uno, trivia, etc.). For those of you who get a little mad for March, we will be projecting the game on the big screen. Sign up online using the QR code or in the member room by Sunday night, 3.10.



CHAPEL INVITATION

St. Paul's student body gathers each morning Monday through Thursday for chapel. Parents are invited to attend any and all chapel services they would like. We love having guests for worship! Chapel begins each morning at 8:05 am. Our chapel offerings for the second semester will go to the MLHS Shining Through Christ Service Group.



SCHOOL CLOSINGS/DELAYS

Winter weather is upon us and with it the potential for school closings and delays. St. Paul's follows the Howards Grove School District (HGSD) as it relates to closings and delays. If HGSD is having school, St. Paul's is having school. If HGSD is closed, St. Paul's is closed. If HGSD is delayed, St. Paul's is delayed. St. Paul's will also send out a TADS announcement via text, email, and/or phone call when school is closed or delayed. Please be sure that all of your contact information is up to date in our TADS system.

St. Paul's Misson:

Partnering with parents in our congregation and community to shine Christ's light on children's lives.

WISCONSIN PARENTAL CHOICE PROGRAM (WPCP)

St. Paul's Lutheran School participates in the Wisconsin Parental Choice Program (WPCP). This is a program designed to assist families who desire a schooling option for their children and meet residency and income requirements. Families who meet these requirements are eligible to receive a tuition voucher from the state to attend St. Paul's Lutheran School. Any student entering 4K, Kindergarten, or 1st grade is eligible to apply through the WPCP. Students transferring from the public school system, out of state, or a homeschool education, may apply at any grade level.

APPLICATION WINDOW: FEBRUARY 1ST THROUGH APRIL 18TH

Please see the following links below for more information. Make note that the application page is not activated yet. It will open on February 1st. You are invited to reach out to Mr. Johnson (Administrative Vice Principal in Charge of WPCP) or Mr. Wieting (Principal) with any questions.

2024-2025 INCOME LIMITS

WPCP APPLICATION HOME PAGE

FREQUENTLY ASKED QUESTIONS



PIZZA TIME - VOLUNTEERS NEEDED!

We had a RECORD PTF Pizza Sale this year, selling

4,478 PIZZAS

WAY TO GO! The classroom pizza party winner will be announced next week. For now, we need LOTS of volunteers for Assembly Day on Saturday, February 24th! Click on the link below to sign up.

YOU COULD WIN SOME FREE PIZZAS!

How? Just by signing up to help on assembly day! One entry per family name!

I could also use donations of paper grocery bags for pizza packaging (please bring to the office). Contact Katie Meyer with any questions!

PIZZA ASSEMBLY DAY VOLUNTEER SIGN-UP 2024

FRIDAY NIGHT PIZZA SET-UP HELP

PTF PIZZA SALE LEADERSHIP VOLUNTEERS 2024

2024-2025 TUITION INFORMATION

For the past few years, all families have had the opportunity of paying tuition at a rate of what a member of St. Paul's would pay. This was a temporary arrangement. As we look ahead to the 2024-2025 school year, the School Board of St. Paul's would like you to be aware of what tuition will look like for next year.

3K/4K TUITION

The cost for educating a student at St. Paul's Lutheran Preschool is approximately \$6600.

3K is only offered at half days. Wrap around care is offered from 11:30 a.m. - 5:30 p.m. at \$7.50 per any part of the hour

- ◆ 5 Days (Full) \$5000
- ◆ 5 Days (Half) \$2500
- ◆ 4 Days (Full) \$4000
- ◆ 4 Days (Half) \$2000
- ◆ 3 Days (Full) \$3000
- ◆ 3 Days (Half) \$1500
- ◆ 2 Days (Half) \$1000

K-8 TUITION

The cost for educating a student at St. Paul's Lutheran School is approximately \$8200.

◆ **Member Families of St. Paul's, Howards Grove**

- ◆ \$875 per child (1st and 2nd child)
- ◆ \$425 per child (3rd child and each subsequent child)

◆ **Sister Congregation Families (Members at Another WELS/ELS Church)**

- ◆ 1st Child \$2600
- ◆ 2nd Child \$2500
- ◆ 3rd Child \$2400
- ◆ Family Cap \$7500

◆ **Non-WELS/ELS Families**

◆ Speak with the principal for more information.

◆ **Before School, Wrap-Around, After School Care**

◆ The cost to make use of these programs is \$7.50 per hour or any part thereof.



PTF MEETING

◆ Our Parent Teacher Friendship (PTF) group is holding its third quarterly meeting next Thursday, February 22. A light dinner will be served beginning at 5:30 pm in the school cafeteria. PTF business will begin at 6:00 pm. Babysitting will be provided.

◆ Parents and school families are invited to attend. There will be an Open Forum hosted by the School Board of St. Paul's. Two Open Forums are required each year as a part of the Wisconsin Parental Choice Program (WPCP).

St. Paul's Misson:

Partnering with parents in our congregation and community to shine Christ's light on children's lives.

CALL UPDATE

On February 5, Dawn Johnson received a call to Salem in Milwaukee to serve as a 5K teacher. This weekend, Mrs. Johnson returned that call and will continue to serve St. Paul's.

On February 11, Nathan Meitner received a call to Sola Fide Academy in Lawrenceville, GA. Please pray for Mr. Meitner, and encourage him as he considers this opportunity for service in God's kingdom.

AMERICAN HEART ASSOCIATION

Hello Families,
The American Heart Association's Kids Heart Challenge has wrapped up.

Thank you to the entire St. Paul's Lutheran School community for opening your hearts and supporting the mission of the American Heart Association. Together we have built a safer community by learning Hands Only CPR, 4 signs of stroke and heart-healthy habits, all while helping others.

Click [HERE](#) to hear from National Youth Market Ambassador, Audrey Doering, Wausau, WI.

EASTER EGG HUNT

The Activities committee is hosting another Easter Egg Hunt this year! Date: Saturday, March 30
Schedule: 9:30 - arrival (head into our new gathering space through the school entrance) & Easter Egg Hunt (ages 0-12) 10:00 - Activities (crafts and coloring pages galore).



This year as a way to try and make the hunt equally fun for all, children will exchange 10 empty eggs they find for a treat bag full of yummy snacks and candy. There will also be donuts, juice, milk, and coffee. If the weather is bad, the children will do their hunt throughout our building. Register by March 18 using the QR code to help the committee plan for the event. There will also soon be a paper signup in the coatroom. Contact Luther Curia with any questions: luther.curia@stpaulshowardsgrove.org; 920.287.8575

2024-2025 SCHOOL CALENDAR

Linked below is an academic calendar for the 2024-2025 school year. This calendar has been approved by the School Board of St. Paul's. However, changes may be made at the discretion of the School Board. Please watch for updates as they are published.

[CLICK HERE TO ACCESS THE 2024-2025 SCHOOL YEAR CALENDAR!](#)

NIGHT OF THE ARTS

St. Paul's school families & church members are invited to attend a Night of the Arts on Friday, March 1st! Come anytime between 6:00-8:00 p.m. to experience art from all age levels, live music, Hors d'oeuvres, A Kid's Art station, and fellowship with families!

Hors d'oeuvre Donations: For this event, small appetizers will be served by upper grade students! We are looking for some help from parents to provide small hors d'oeuvres to serve for this event. Just think "finger foods!" Can be as simple or fancy as you'd like.

[CLICK HERE FOR THE APPETIZER SIGN-UP!](#)

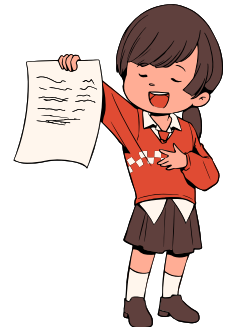
ATTENTION ALL ARTISTS! St. Paul's members and school families, we are still looking for more art to display along with our school projects! This includes adults & kids! If you have a gift for painting or drawing, quilting or woodworking, photography or wood-burning, etc. please sign up to share your art! Grab something from the past or create something new!

[CLICK HERE FOR THE ART PROJECT SIGN-UP!](#)



5TH-8TH GRADE FORENSICS

It is that exciting time of the year where your student will participate in our forensics program at St. Paul's. In the next few weeks, your child will be using their God-given talents of acting, reading, storytelling, and writing. This is all in preparation for Forensics Night, which will be on Thursday, March 21, 2024, 6:30- 8:00 pm.



By now your student should have selected a category that appeals to them. Now they must select an appropriate piece or write an appropriate piece (depending on the category) by Monday, February 26. Please make sure they have their piece to school by Monday, February 26, so that they can show their teacher and start to practice the piece on their own. The first practice where they will present to adult helpers will be during the school day on Monday, March 4 (2:30 pm). If you have any questions, please feel free to reach out to Pastor Kock or Mr. Wieting.

MIDTERM

Monday, February 12, marked the midterm of the 3rd Quarter. This would be a great time to login to your Educate account and check in on your student's progress. Please reach out to your student's teacher with any questions.

DOUBLE KWIK TRIP

Earn funds for our school twice as fast because Kwik Trip is doubling the discount given to us through the month of February. (Now 10%). You can buy your Scrip between services or by calling or visiting the office.



MIDWEEK LENT SERVICES & MEALS

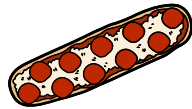
On February 14, the season of Lent begins with Ash Wednesday and a worship service with communion at 6:30 pm. This year for our Lent Wednesdays, we will follow the theme "God on Trial" and once again our area WELS pastors will rotate around the different churches.

Before each of these Wednesday services, there will be a dinner served from 5:00-6:00 pm by various volunteer groups. A freewill offering will be gathered to defray the cost of the food and supplement various areas of our ministry.



WEDNESDAY, FEBRUARY 21ST
PULLED PORK & HOT BEEF
BUSHMAN FAMILY

WEDNESDAY, FEBRUARY 28TH
FRENCH BREAD PIZZAS
PIONEERS



WEDNESDAY, MARCH 6TH
BUILD YOUR OWN SUB
TEACHERS

WEDNESDAY, MARCH 13TH
SLOPPY JOES
LADIES AID



WEDNESDAY, MARCH 20TH
CHILI
YOUTH GROUP

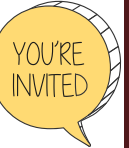
February

LITTLE BALLERS PRACTICE
TUESDAY, FEBRUARY 20TH @
3:30PM



K-1ST SING MIDWEEK LENT
WEDNESDAY, FEBRUARY 14TH

PTF SUPPER & MEETING
THURSDAY, FEBRUARY 22ND
MEAL @ 5:30
MEETING @ 6PM



PIZZA ASSEMBLY DAY
SATURDAY, FEBRUARY 24TH
BEGINNING @ 8AM

LITTLE BALLERS SCRIMMAGE
TUESDAY, FEBRUARY 27TH @
3:30PM



C TEAM INTRA-SQUAD SCRIMMAGE
TUESDAY, FEBRUARY 27TH @
4:30PM

5TH-8TH SING MIDWEEK LENT
WEDNESDAY, FEBRUARY 28TH



HELLO March



NIGHT OF THE ARTS
FRIDAY, MARCH 1ST @ 3:30PM

5TH-8TH SING @ CALVARY
SUNDAY, MARCH 3RD



2ND-4TH SING MID-WEEK
WEDNESDAY, MARCH 6TH

NO SCHOOL
FRIDAY, MARCH 8TH